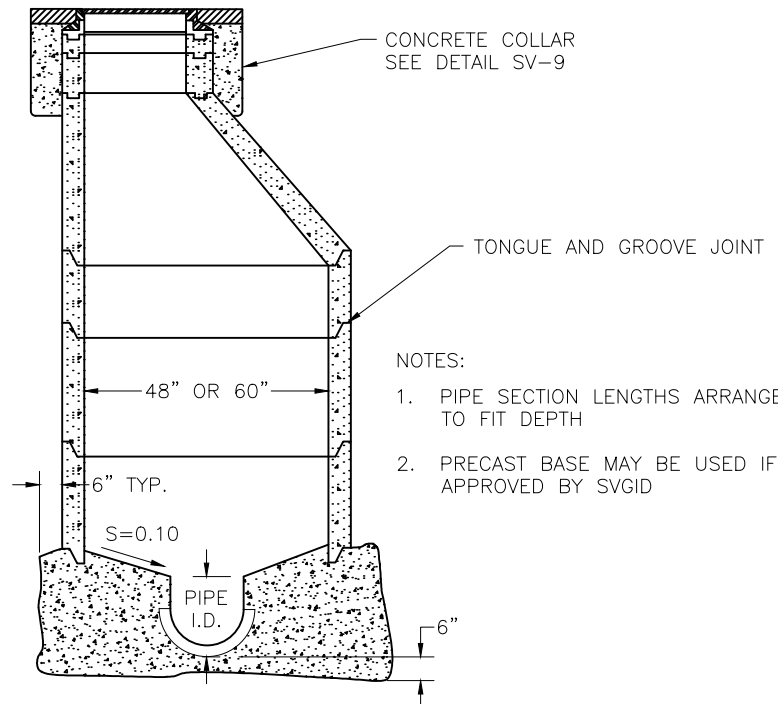
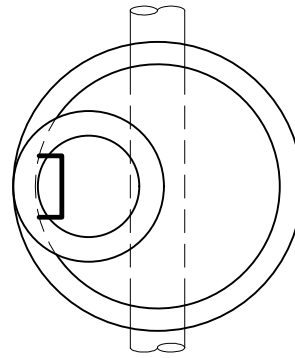
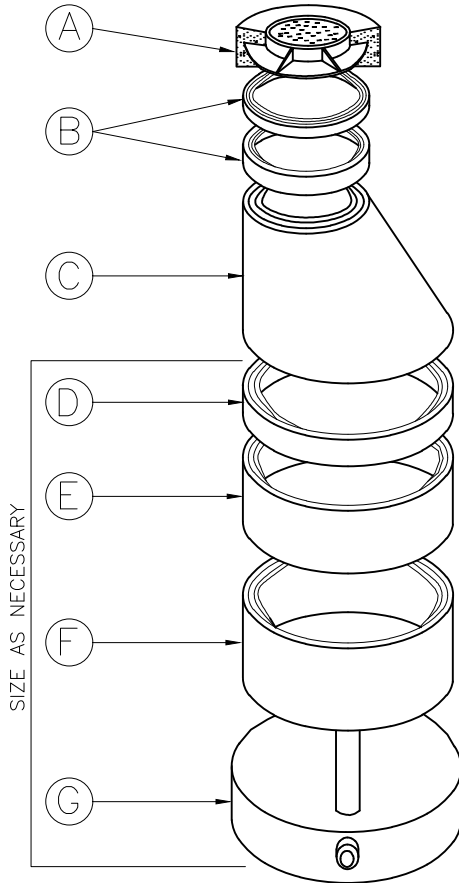




PRECAST MANHOLE COMPONENTS SHALL CONFORM TO ASTM C-478

SYM	ITEM
A	RING & COVER
B	GRADE ADJUSTING RING
C	ECCENTRIC TAPER
D	1' SECTION REINF. CONC. PIPE
E	2' SECTION REINF. CONC. PIPE
F	3' SECTION REINF. CONC. PIPE
G	BASE



- NOTES:
- PIPE SECTION LENGTHS ARRANGED TO FIT DEPTH
 - PRECAST BASE MAY BE USED IF APPROVED BY SVGID

EXPLODED VIEW

SANITARY SEWER MANHOLE NOTES:

- MANHOLE MATERIAL AND CONSTRUCTION SHALL CONFORM TO SECTION 2722 "EXTERIOR SEWER" OF THE SUN VALLEY GENERAL IMPROVEMENT DISTRICT'S WATER AND SEWER MAIN LINE INSTALLATION SPECIFICATIONS. ALL PRECAST CYLINDER UNITS, PRECAST CONCRETE TAPER SECTIONS, AND PRECAST BASE UNITS (WHEN ALLOWED) SHALL MEET THE STRENGTH REQUIREMENTS FOR "PRECAST REINFORCED CONCRETE MANHOLE RISERS AND TOPS" ASTM C-478.
- MANHOLE FRAME AND COVERS SHALL CONFORM TO ASTM A48-35B AND SHALL BE OF A SIZE APPROVED BY THE SVGID. COVERS SHALL READ "SVGID SANITARY SEWER" AND HAVE BOTH A SIDE PRY AND BLIND PICKHOLE.
- MANHOLE BARREL SECTIONS AND CONES SHALL BE SEALED WITH TWO CONTINUOUS ONE INCH DIAMETER ROLLS AROUND THE BARREL SECTION AND BOTH TONGUE AND GROOVE AREAS. SEALANT SHALL BE KENT SEAL NUMBER 2 JOINT SEAL FROM HAMILTON-KENT OR APPROVED EQUAL.
- STEPS SHALL BE INSTALLED IN ALL MANHOLES GREATER THAN 4 FEET DEEP. MANHOLE STEPS SHALL BE STEEL CORE (ASTM A-615) COATED WITH COPOLYMER POLYPROPYLENE (ASTM 2146) COLORED BRIGHT SAFETY ORANGE, MUST BE COMPATIBLE FOR INSTALLATION IN PRECAST MANHOLE BARREL SECTIONS, MUST MEET ASTM C-497 STANDARDS FOR STEP EMBEDMENT, MUST RESIST PULL OUT TO 1500 POUNDS AND HANDLE 300 POUND LIVE LOAD BY PROVIDING LOCK IN PLACE COMPRESSIVE FIT. STEPS SHALL BE ALIGNED VERTICALLY AT 12" CENTERS.
- NO MORE THAN 12 INCHES OF GRADE ADJUSTING RINGS SHALL BE USED BETWEEN THE TAPER AND THE RING AND COVER. IF MORE THAN 12 INCHES OF ADJUSTMENT IS REQUIRED, ADDITIONAL BARREL SECTIONS SHALL BE INSTALLED.